



kernTerminal

24/7 Smart Terminals

The central point of contact



Smart Terminals The central point of contact

Goods delivery in the era of mobility

24/7 Smart Terminals are very easy to explain: They are parcel and goods delivery terminals controlled by intelligent software and connected to the Internet, which enable secure goods delivery even if the sender and recipient are not present at the same time.

These systems are based on modular, non-refrigerated or refrigerated lockers and can be customised extensively to suit particular needs. An ergonomically-designed user interface ensures secure operation and guarantees that only recipients specified by the sender can access the stored goods.

24/7 Smart Terminals are predestined for booming online commerce. With a 24/7 Smart Terminal, a delivery can even be made when the customers are not at home. They – and only they – can access the shipments around the clock: in conveniently situated places along their route to work, typically at train stations, or in central locations in their neighbourhood.

Other popular applications are the supply of spare parts for service technicians and companies, something that is usually done at night, and the transfer of confidential documents at medium-sized and larger companies.

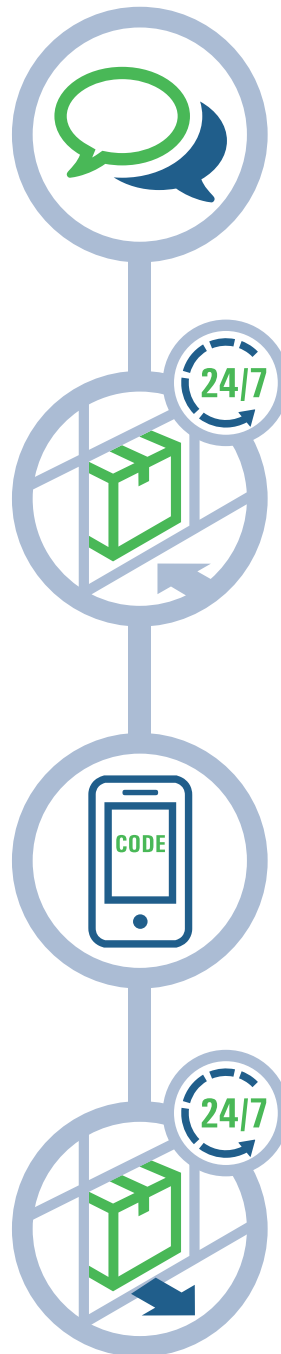


Uniquely easy, around the clock

Pick up or return parcels at any time. Intelligent automated logistics systems for end users enable customer-friendly round-the-clock service and guarantee the greatest possible efficiency for customers and suppliers. This modern logistics solution consists of a terminal with complete operation software. All information for parcel tracking, user management and operation monitoring can be called up electronically at any time.

Endless possibilities

This last-mile logistics solution is suitable for nearly all areas and industries. Thanks to 24/7 Smart Terminals, sales can be expanded and made available around the clock, which allows customers to be independent, something people expect today. The result is new competitive advantages.

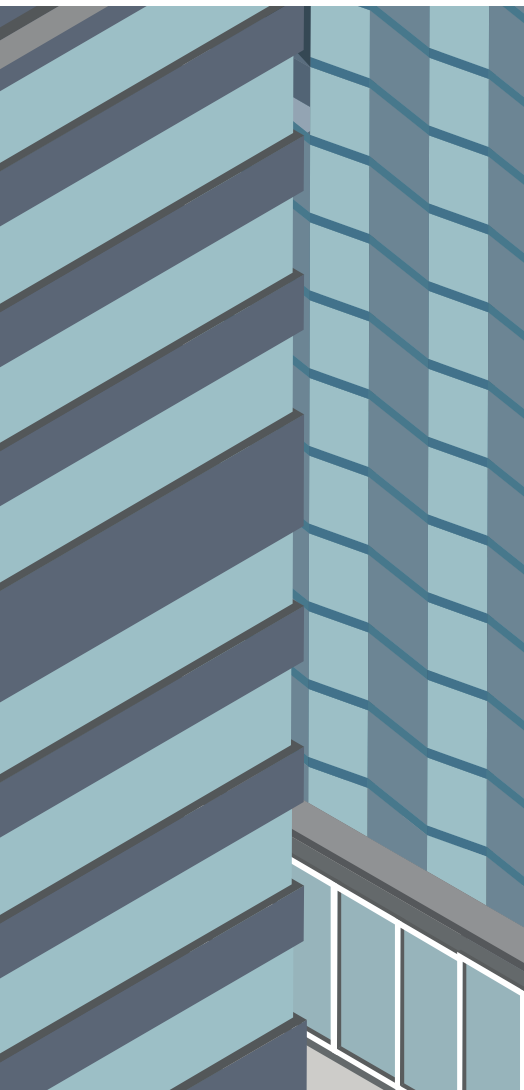


Uncomplicated function

24/7 Smart Terminals are designed to fulfil practical requirements. Here is how it works.

Easy to use:

- The customer places an order online. The sender agrees with the recipient that his shipment can be picked up at a particular parcel terminal location.
- The supplier places the parcel intended for the recipient in a 24/7 Smart Terminal.
- The system then informs the recipient via SMS, e-mail or push notification and sends him the security code.
- The recipient picks up the parcel. Then the 24/7 Smart Terminal informs the sender that delivery has been made.



Models for all kinds of requirements

The product range includes models for use indoors and outdoors, as well as for a wide variety of applications with special requirements.

All models distinguish themselves with their robust construction and secure protection against unauthorised access. Another security factor is the sophisticated, user-friendly software.

1_City Terminal

The City Terminal is used where life happens and people meet.

2_Home Terminal

The Home Terminal is the central contact point where people live.

3_Refrigerated and Freezer Terminal

The Refrigerated and Freezer Terminal opens up new opportunities in the food and pharmacy sectors.

4_Flexi Terminal

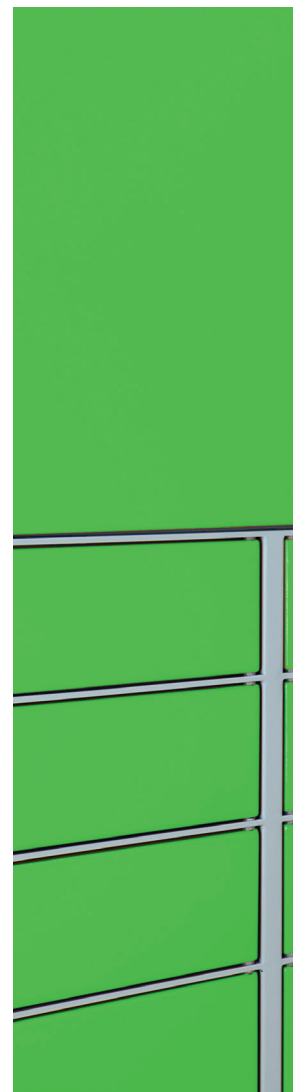
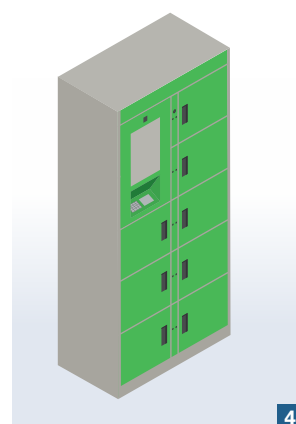
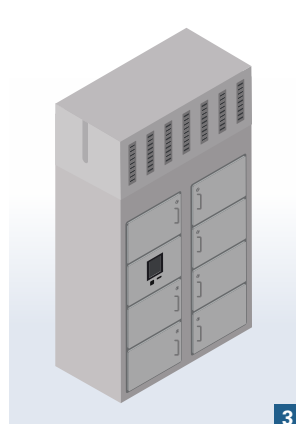
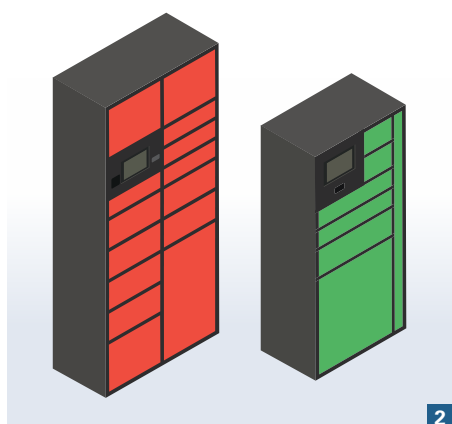
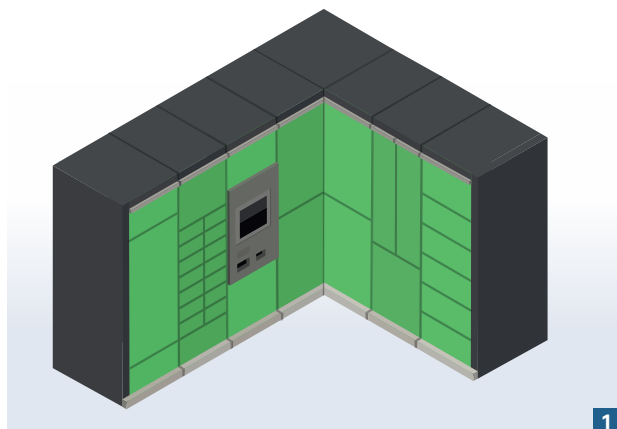
A cost-effective, flexible, lightweight terminal has been developed for indoor use. The construction consists of plastic elements of the latest generation. It is ideal for installation in rooms, gyms, residential areas, etc. It can also be used to send and collect online purchases or store personal items.

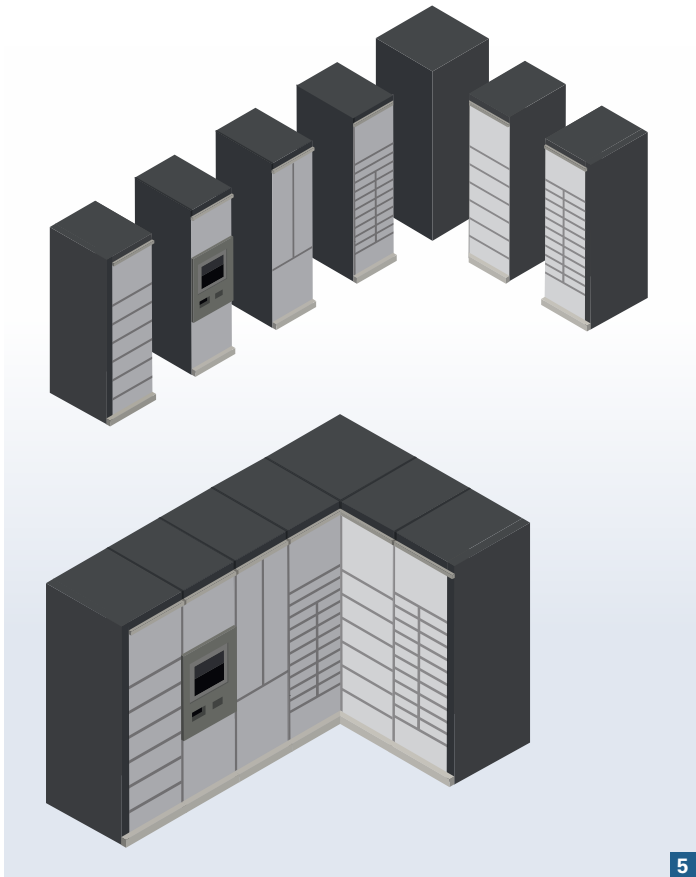
5_Modular structure

Thanks to a sophisticated toolbox system, the individual modules can be combined according to the user's needs. This is possible with freely-combinable lockers in sizes from XS-XL.

6_Advertising spaces with a kick

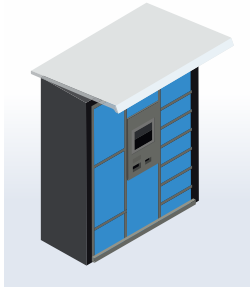
The terminals can be designed individually and thus used as attractive advertising spaces – either for a company's own products or rented to other companies.



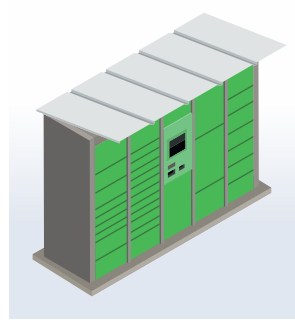


Infinite possibilities

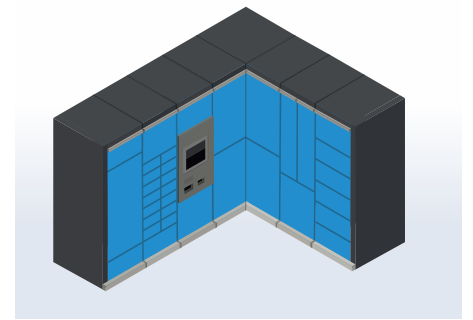
1_ If a service technician needs consumables outside of business hours, this is no problem with the City Terminals.



3_ Are you bound to business hours? With the City Terminal, goods can be sold all the time. Customers can shop even after stores are closed.

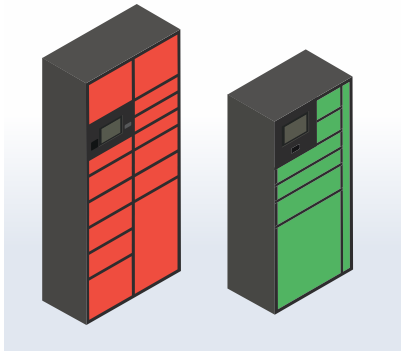


6_ A central City Terminal can be installed in larger neighbourhoods. This simplifies transport for suppliers and courier services.

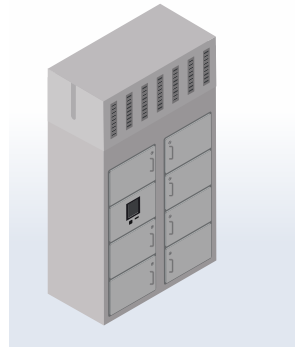


2_ Add a Home Terminal to the post box so that the receiver no longer has to be at home for parcel deliveries. Receivers will be informed via SMS or e-mail when a parcel is received.

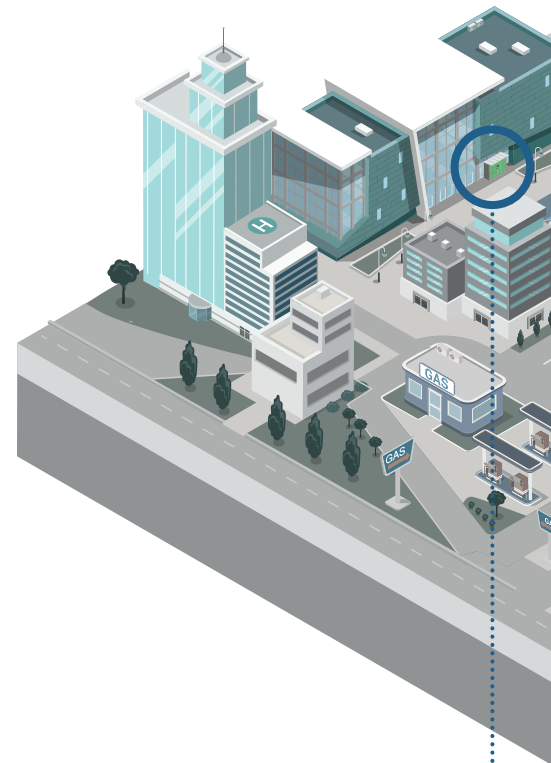
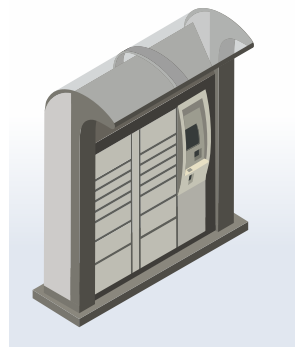
Simplify the handling of confidential documents. With a Home Terminal, confidential transfer and efficient internal delivery are guaranteed.

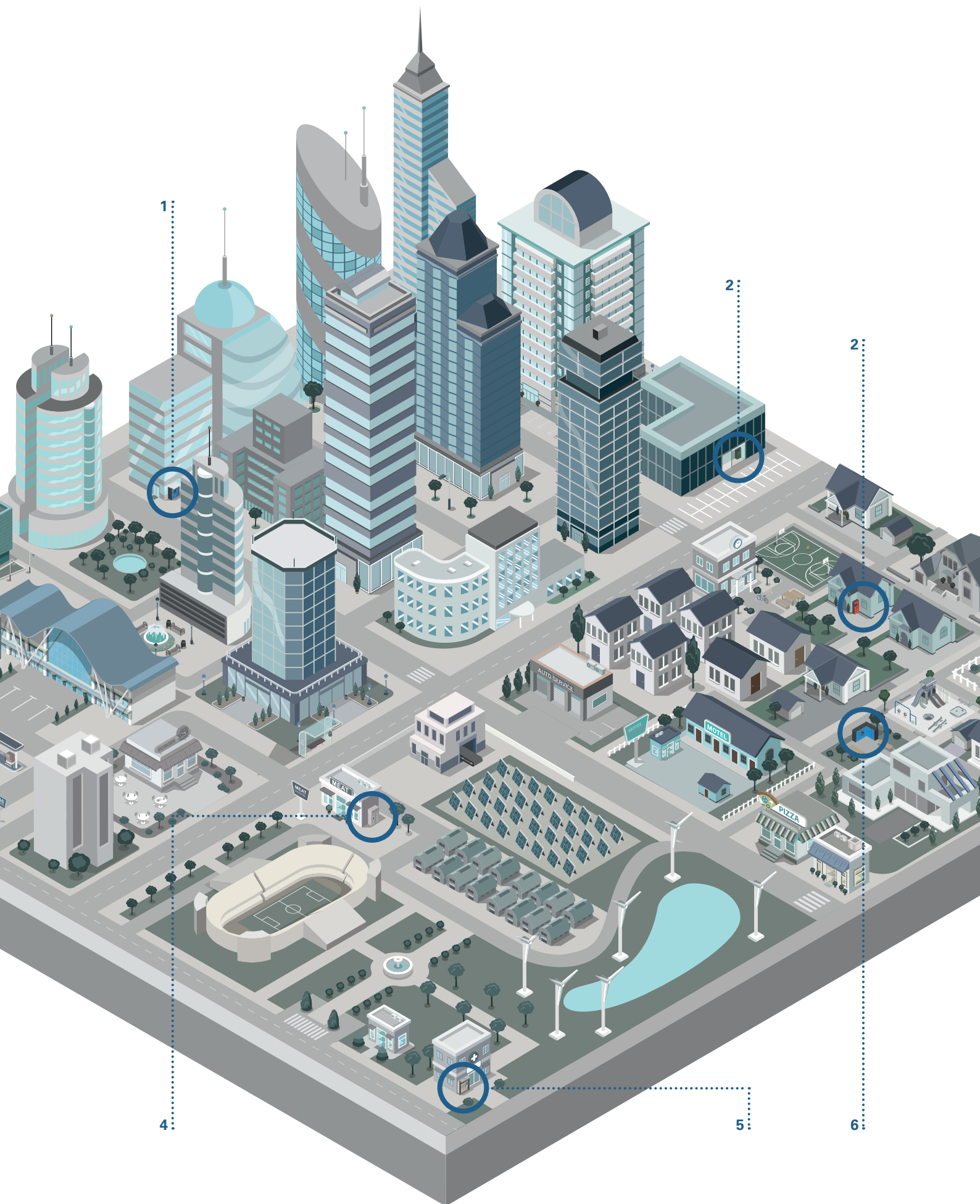


4_ Only with a refrigerator and freezer terminal fresh products and medicines can be offered at any hour of the day or night – and even on the weekend.



5_ Pick-up stations for online shops. The best logistical solution for non-existent bricks and mortar stores. Individual modules or the advertising space can also be rented to third-party suppliers.





Many advantages for a quick return on investment

Online-commerce

More and more, it seems that logistics determine who will succeed in online commerce. However, it is a challenge to deliver shipments to the recipients when they are not at home. In addition, customers are increasingly expecting to have fresh products and medicines delivered. Anyone who can satisfy customers better under these challenging circumstances will secure long-term advantage in the market. The 24/7 Smart Terminal makes an important contribution to secure and user-friendly goods delivery; whether for delivery or returns – thanks to refrigerated elements, even for fresh products. Online commerce can also optimise its deliveries, which simplifies planning and reduces logistics costs.

Retail commerce

Increasingly, modern, mobile consumers want to shop around the clock – a steak late Saturday evening, an urgently-needed medicine which can only be picked up after the stores have closed. Smart retailers and large wholesalers offer solutions which can be implemented especially intelligently with normal or refrigerated 24/7 Smart Terminals. This means that they can reach new customer segments and use personnel better. When things are quiet, employees can fill up and service the 24/7 Smart Terminals.

Service organisations

A typical application for 24/7 Smart Terminals is spare parts supply. Logically, this is done at night, so that service technicians and service organisations can start work first thing in the morning. 24/7 Smart Terminals enable secure, confirmed transfer even when the recipient is not there.

Property management

A 24/7 Smart Terminal in a neighbourhood provides advantages for renters, who have the certainty that their parcels will be available for them close to home after their return.

Medium-sized and large companies

The transfer of confidential documents at medium-sized and large companies is often difficult since the recipients may not be available in their workplace. 24/7 Smart Terminals solve this problem since the recipients can pick up the shipments in a particular place at any time and the sender knows that the shipment is now in the right hands.

Smart Terminal lessors

For investors, setting up 24/7 Smart Terminals and leasing them in whole or in part to companies and organisations is an interesting opportunity. A charge can be levied each time a user's terminal is opened, for example.



Services from A–Z

Together with its partner companies, the Kern Group ensures that investors and customers profit maximally from 24/7 Smart Terminals. The Kern Group assists customers with installation, programming and commissioning, on through to customer service thanks to an attractive Service Level Agreement. Customers will appreciate Kern's expertise from the very start. Kern experts are available from evaluation to installation and commissioning. They know where such terminals are needed,

how they should be dimensioned and they can offer optimal solutions that win customers over with a surprisingly good price-performance ratio.



Smart Terminals Software

The software forms the heart of every terminal. This intelligent control system ensures that the terminal is always ready for use, that all processes from dispatch to collection of the parcels by the customer function flawlessly. The Kern Group offers versatile and flexible software variants for every need.

Features

- Individually tailored software variants
- Interface to all types of Smart Terminals
- Traceability of packages
- Pre-reservation of parcel compartments
- Automatic notification of the end customer
- Flexible software development
- user-friendly

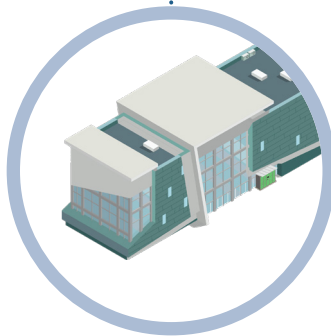
The different markets

You have a project and want to optimize parcel delivery for:



Offices, Universities, ...

Retail, Online Shops or food industry



Smart Easy

Smart Easy is a turnkey software for handling parcels delivery management in closed user groups. Based on local architecture, this is the quick answer for all small ecosystems building up a complete parcels solution with seamless integration and very intuitive process.

Smart Tracking

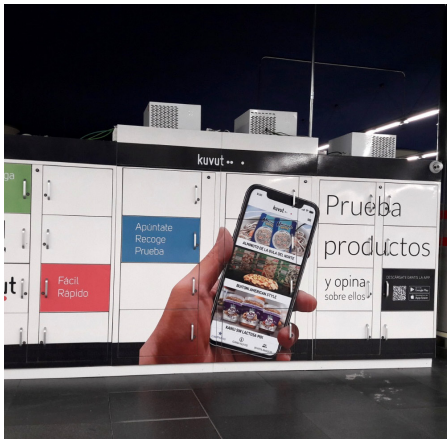
Smart Tracking is a global solution that allows you to streamline and optimize the distribution of your incoming business sensitive objects. Such as your letters, registered letters, parcels or any other object requiring precise tracking into your company departments.

Smart Bopis

Smart Bopis is a complete toolbox for a variety of Bopis-centric applications. This cloud-based architecture offers a wide range of business integration processes with powerful capabilities to cover all steps of the deployment process (mobile apps, web portal, notifications, etc.).

References from around the world

Many companies rely successfully on 24/7 Smart Terminals.



Metrostation, Madrid



Drogerie Markt, Hamburg



Decathlon, Madrid

Logistics-/delivery services

Residential buildings

Others?



Smart Pudo

Smart Pudo is an open architecture that contains a large number of functions for building a complete personalized delivery logistics network. It offers a variety of ways to control and secure the steps of the delivery process, provide multiple endpoints and enable seamless integration into existing solutions (3PL, payment system, ect, ...).



Smart Living

With the aim of optimizing and securing the increasing flow of residential plots, the Smart Living is a tool for all residents and property managers. Based on SaaS technologies and API-based solutions, Smart Living offers a highly customizable solution for all types of requirements.



Specific solutions

The provision of a tailor-made integration is an important part of the global Kern service and IT team. Shop & Collect airport service, lost and found objects, ID card management, etc. are concrete examples to meet specific requirements.



Kern service

Trust is the foundation of good cooperation

The decision to purchase a Kern product is a choice for a continuous, trusting relationship. Reliable service is one of the key pillars of our company. For optimum system availability and productivity, the Kern Group offers a comprehensive and reliable service portfolio.

- Personal consultancy on-site
- Requirement analysis, and solution proposal according to customer needs
- Installation of the Kern systems
- System integration
- On-site training of your employees
- Reliable support and maintenance during operation
- Customer-oriented service and maintenance models after purchase.

Kern worldwide

Innovative systems for document processing and logistics

Kern AG is a Swiss manufacturer and worldwide supplier of products, solutions and services in the field of inserting and packaging systems as well as parcel terminals. The software and platforms that are tailored to the product and customer complete the Kern system landscape.

For more than seven decades, Kern has stood for great innovation, quality, flexibility and reliability. Factors that mean one thing above all: the highest level of security and service.

The basis for this is flexible production planning and process control on the one hand, and a long-standing and qualified team of experts in development on the other.

The Group operates in around 50 countries worldwide and employs about 750 people. Kern Service is available worldwide with 450 service technicians, on 365 days a year.

Business Units



kern*Mail*



kern*Pack*



kern*Terminal*



kern*Service*



Headquarter

Kern AG
3510 Konolfingen
Switzerland

Phone +41 31 790 35 35
info.smart-terminal24@kernworld.com
www.smart-terminal24.com

Subsidiaries

Belgium www.kernnv.be
Germany www.kerngmbh.de
France www.kernfrance.fr
Great Britain www.kern.co.uk
Netherlands www.kernbv.nl
Spain/Portugal www.kern.es
USA/Canada www.kerninc.com